

# Installation and Maintenance Manual

## Flobull Aerators



7, rue de l'Industrie - 25110 BAUME-LES-DAMES - FRANCE  
Tel: (+33) 3 81 84 01 32 Fax: (+33) 3 81 84 16 15  
Email [faivre.aqua@wanadoo.fr](mailto:faivre.aqua@wanadoo.fr) Internet : <http://www.faivre.fr>



## I) IMPORTANT WARNING

**This manual should be stored with the machine. If the machine is sold or transferred to another party, make sure that the manual is handed over as well, so that the new owner becomes aware of the functioning of the machine and important warnings.**

**These warnings are aimed at protecting your safety and that of others.**

### **Upon delivery:**

**When you take delivery of the machine, unpack or have it unpacked immediately. Check its general appearance and record any qualifications on the delivery slip or removal slip, a copy of which will be retained by you.**

### **Operating**

**This machine has been designed to be used by adults. Take care to ensure that children do not have access to it.**

**Before cleaning or maintaining your machine make sure that no part of it is live (all the switches must be set to "Off" and the power cable must be disconnected).**

**Read these instructions carefully before installing and using the machine. The manufacturer shall not be held liable for damages or injuries due to any failure to comply with these warnings.**

### **Electrical connections:**

#### **Check the following:**

- that a 30 mA differential circuit breaker is fitted at the top of the line
- that the power of the installation is sufficient
- that the power supply lines are in good condition
- that the wire diameter is in accordance with the installation rules.

**The manufacturer shall not be responsible for any accidents or incidents due to the absence or deficiency of the earth connection.**

**The machine has protective covers. If you remove a cover for maintenance, remember to put it back on after the operation.**

### **Contractual guarantee**

**The manufacturer shall replace any faulty parts for one year beginning from the starting up of the machine, with the exception of the cases provided in the section relating to exceptions.**

### **Conditions of application**

**To make the guarantee come into operation, present the guarantee certificate to the distributor from whom you purchased the machine. The distributor may or may not bear the labour, travelling and transport costs depending on the distributor's terms of sale.**

## Exceptions

**Please note that the guarantee shall not apply if**

- **the damage is due to a cause outside the machine (impact, abnormal voltage fluctuations etc.), or a failure to comply with the installation or operating conditions provided in this manual, an operating error, negligence, faulty installation or installation that does not comply with the rules and recommendations of the electricity company etc.**
- **the user modifies the equipment or removes the manufacturer's plate or serial number**
- **the machine is repaired by personnel that have not been authorised to do so by the manufacturer or the vendor**
- **the machine is used for purposes other than those for which it is designed.**

## Legal guarantee

**The provisions of the contractual guarantee do not exclude the benefit of the legal guarantee for latent defects and faults. That guarantee shall apply in all cases as provided under articles 1641 et sequentes of the Civil Code.**

# Flobull Aerators

## ELECTRICAL INSTALLATION

### CONNECTION:

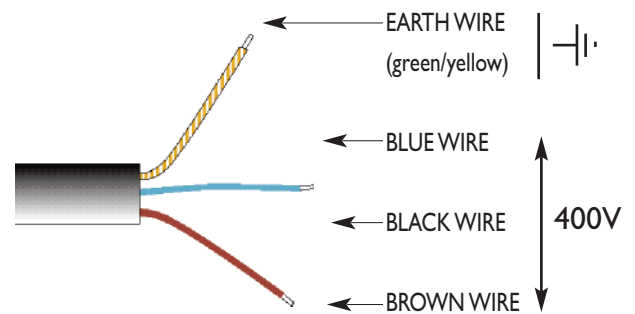
Our aerators are available in two voltage versions, 380-V three-phase and 220-V single phase. Regardless of the version, the electrical connections shall only be made by a qualified professional if they have not been completed in the factory (contact switch connection).

### **THREE-PHASE machine connection.**

IMPORTANT! THIS MACHINE IS TO BE CONNECTED TO A **THREE-PHASE 400V** SYSTEM.

CONNECT THE GREEN AND YELLOW CONDUCTOR TO THE EARTH AND THE OTHER COLOURS TO THE THREE PHASES.

THE MOTOR MUST BE PROTECTED FROM OVERLOAD BY A MAGNETO-THERMAL CIRCUIT BREAKER SET TO THE NOMINAL MOTOR INTENSITY. IF YOU HAVE NOT ORDERED SUCH A CIRCUIT BREAKER WITH YOUR FLOBULL MACHINE, HAVE IT INSTALLED BY AN ELECTRICIAN. IN ORDER TO ELIMINATE THE RISK OF ELECTROCUTION, INSTALL A 30-MA DIFFERENTIAL CIRCUIT BREAKER AT THE TOP OF THE LINE.



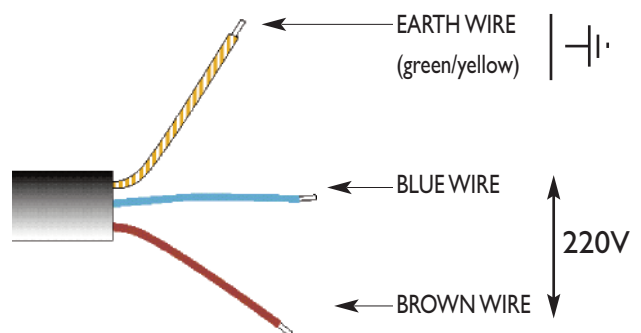
FLOBULL POWER-RATING	THREE-PHASE NOMINAL INTENSITY
0.18KW	0.5A
0.37KW	1A
0.75KW	2A
1.5KW	3.2A

### **SINGLE-PHASE machine connection**

IMPORTANT! THIS MACHINE IS TO BE CONNECTED TO A **SINGLE-PHASE 230V** SYSTEM.

CONNECT THE GREEN AND YELLOW CONDUCTOR TO THE EARTH AND THE OTHER COLOURS TO THE MAINS.

THE MOTOR MUST BE PROTECTED FROM OVERLOAD BY A MAGNETO-THERMAL CIRCUIT BREAKER SET TO THE NOMINAL MOTOR INTENSITY. IF YOU HAVE NOT ORDERED SUCH A CIRCUIT BREAKER WITH YOUR FLOBULL MACHINE, HAVE IT INSTALLED BY AN ELECTRICIAN. IN ORDER TO ELIMINATE THE RISK OF ELECTROCUTION, INSTALL A 30-MA DIFFERENTIAL CIRCUIT BREAKER AT THE TOP OF THE LINE.



FLOBULL POWER-RATING	SINGLE-PHASE NOMINAL INTENSITY
0,18KW	1,5A
0,37KW	3A
0,75KW	4A
1,2KW	6,2A

# Flobull Aerators

You are about to install a Flobull aerator.  
Follow the tips below in order to get the most out of your machine:

## LOCATION:

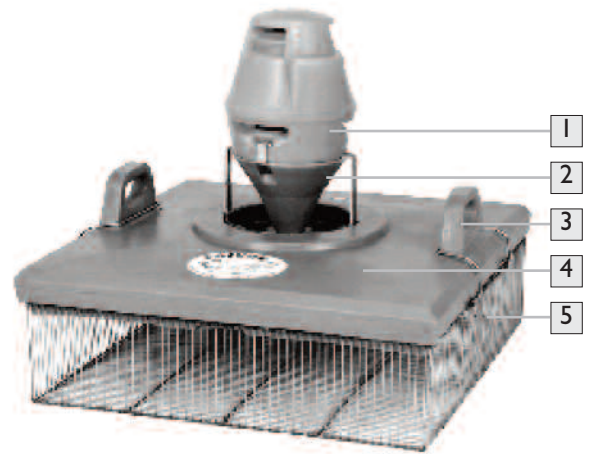
Aerators float on the water and are independent.  
You can place them wherever you wish, providing the flow depth is sufficient, i.e.:

- 30 cm for 0.25 cont. hp
- 40 cm for 0.5 cont. hp.
- 50 cm for 1 cont. hp.
- 60 cm for 2 cont. hp.

## IMPORTANT - Floating out the aerator

With a small vessel, tow the machine to the desired location with the required cable length. Never drop the connector in the water.

Note: If the cable is likely to be damaged by natural or technical causes, it should be sheathed and weighted down.



- 1 - Motor cover
- 2 - Deflector taper
- 3 - Mooring handle
- 4 - Float
- 5 - Stainless steel strainer

## Mooring

The float has two mooring handles.

There are two possibilities:

Fig 1 - Attach two moderately tightened lengths of cable from the shores opposite the float. Recommended for small tanks that are not used for bathing.

Fig 2 - Moor the float to weights (> 10 kg) placed at the bottom of the tank with two slack cables ( $R > 800$  kg).

First sound the depth to determine the length of the cables and add approximately 1 metre. Then place the two weights opposite each other, as far as possible from the machine.

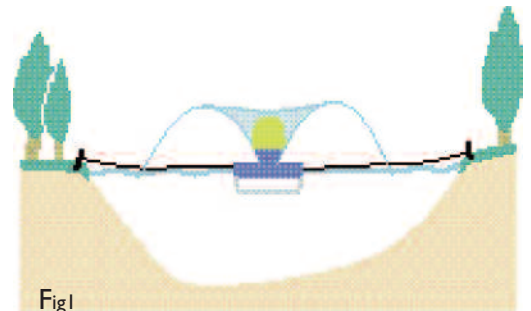


Fig1

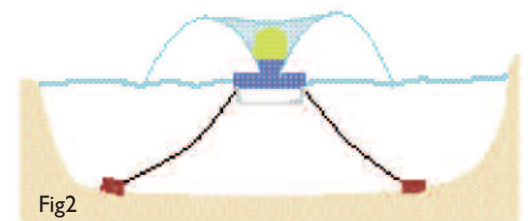


Fig2

Fig 1 - Cable mooring from the shore

Fig 2 - Mooring with slack cables and weights

# Flobull Aerators

## ROTATION DIRECTION:

For 380-V three-phase machines only. Put the machine in the water and connect it. If nothing happens, that means that the motor is running in the wrong direction. Reverse the two phases in the connector or the circuit breaker box.



## **IMPORTANT!**

**BEFORE MAKING ANY CHANGES TO THE CONNECTOR, THE CIRCUIT BREAKER OR THE MOTOR, IT IS IMPERATIVE TO MAKE SURE THAT THE MACHINE IS DISCONNECTED.**

## MAINTENANCE:

### FLOAT:

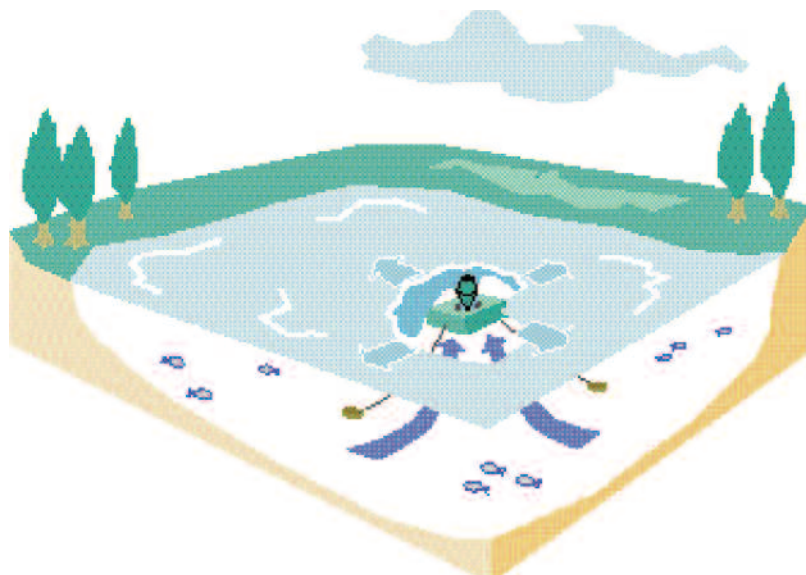
The float has a plug at the top. Never unfasten the plug AND DO NOT LET WATER ENTER THE FLOAT IN ANY CIRCUMSTANCE.

### STORAGE:

In the winter, store the machine in a dry sheltered location. Do not cover.

### MACHINE LOCATION:

The location of the machine is determined on the basis of the configuration and depth of the water tank, in order to ensure that the water is oxygenated as evenly as possible (see Operating).



# Flobull Aerators

## Connection for fig 3

The power supply cabinet shall be made and sold by a professional electrician in order to ensure optimum safety and for the motor guarantee to operate in the event of a failure.

Provide a 30 mA differential circuit breaker to protect personnel and a thermal circuit breaker for the motor. Comply with applicable standards.

**Important** - If the machine is located in an area accessible to people (vessels etc.), a safety area should be marked out (nets, buoys, etc.)

**The turbines run at a speed of 1500 rpm and are a potential hazard.**

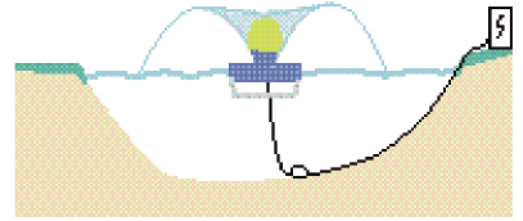
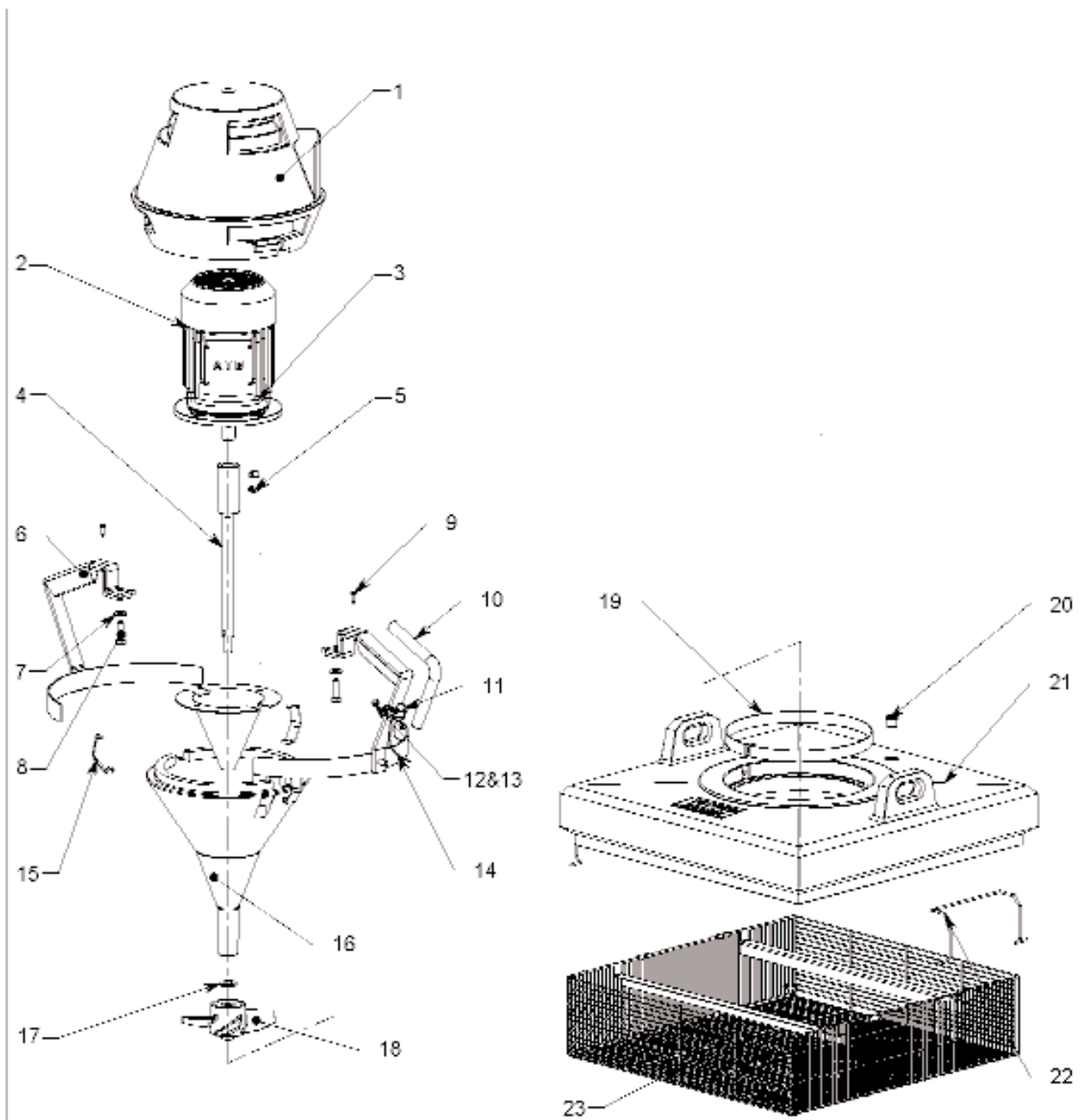


Fig 3 - Placing the electrical cable on the bottom.

# EXPLODED VIEW OF FLOBULL



Rep	Qté	Designation	Reference				
				23	2	Cable inox avec boucles damasce	AFR00000000
8	2	Vis T11M10x35	10910	22	2	Clips de fixation grille/Flotteur	AFR0000401A
7	2	Rondelle plate MN10	10910	21	1	Flotteur Flobull 2 Cv	1 800K
6	2	Dis: support moteur Flobull	AFR000003	20	1	Flanche fileté 3/4"	7307390
5	2	Vis ST10 bout cavette M12x55	12030	19	1	Cercle de fixation	AI B0200002B
4	1	Arbre+manchon Flobull origine 380	AFR0000107G	18	1	Helice 2 Cv quasi-pois	AFR0000003C
3	2	Ecrou M10	10010	17	1	Rondelle inox Ø30/14x4	AFR0000210J
2	1	Moteur 1 phase 41750	129860	16	1	Cône pour Flobull 2 Cv	K900
1	1	Caput moteur Flobull 2 Cv	C900K	15	3	Clips de fixation du capot	AI B0200001A
				14	1	Cable submersible bleu 4x2.5	
				13	1	Ecrou M6	2001
				12	1	Vis 1H M6x16	2080
				11	1	Coller inox gaine caoutchouc	1901627
				10	1	Jeuau caoutchouc Ø20x270	
				9	2	Vis CRF 4 Øx20	212106/1.8x19

## AERATEUR FLOTTANT FLOBULL

7 RUE DE L'INDUSTRIE  
25110 BAUME LES DAMES  
TEL: 03.81.81.01.32 FAX: 03.81.81.16.15

