

FAIVRE



Trout / Salmon



Tilapia



Sea Bream



Sea Bass

Helios 10 working on Cod hatchery in Norway

## HELIOS 10 - 100 GRADER : for alevin and small fish

HELIOS 10 - 100 is a high precision grader with a huge capacity , it is made to efficiently grade smolts, sea bass, sea bream, Tilapias..

Light and easy to handle, HELIOS 10 - 100 is adapted to every situation. Made to meet the needs of hatchery farms.

### Compact and light grading.

- ⇨ 5 or 8 grading channels of 1600mm length.
- ⇨ 8 x Ø 125 mm outlets on both side.
- ⇨ Made of polyester and AISI 316L/AISI 304L stainless steel.
- ⇨ A working out watering system fitted with adjustment gates.
- ⇨ A grader fitted with the performing SPS Technology made for a high speed grading and without any injury.
- ⇨ Electronic adjustable grading speed



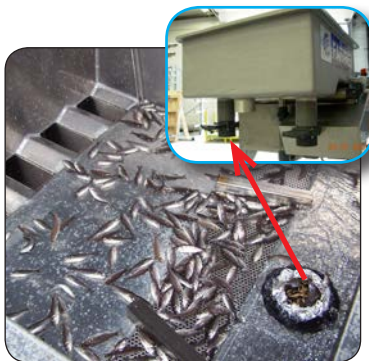
Emergency stop



Grading speed variator

Main switch

Fish grader IP 67 electric panel.



Inlet hopper with special system to plug a fish pump.



Accurate adjustment vernier.

Fish Species	Breams Tilapias	Trouts/ Salmons Bass	Trouts/ Salmons Bass
Grader name	Helios 10	Helios 10	Helios 100
Number of channels	5	5	8
Number of size	4	4	4
Channel length (mm)	1600	1600	1600
Channels opening max. (mm)	28	28	28
Number of outlets	8 x 125mm	8 x 125mm	8 x 125mm
Fish size mini/maxi	0,8 to 100gr	1 to 120gr	1 to 120gr
Hourly capacity (fishes/h) of 1gr	100.000	100.000	150.000
Hourly capacity (fishes/h) of 5gr	60.000	60.000	100.000
Approx. weight (kg)	280	280	400
Dimensions : L / l (m)	3,30 / 1,00	3,30 / 1,00	3,80 / 1,58
Height (m)	1,34 to 1,60	1,34 to 1,60	1,34 to 1,60
Motor power (50Hz)	0,25kw	0,25kw	0,25kw
Water pump need flow (m <sup>3</sup> /h)	20	20	20
References fresh water	TH1054	TH1054	TH1084
References sea water	TH1056	TH1056	TH1086

These figures have been recorded with fish pump for feeding the grader.



Pictures and technical data in this document are not contractual. FAIVRE Sas can also bring any modification to its equipment at any time.